

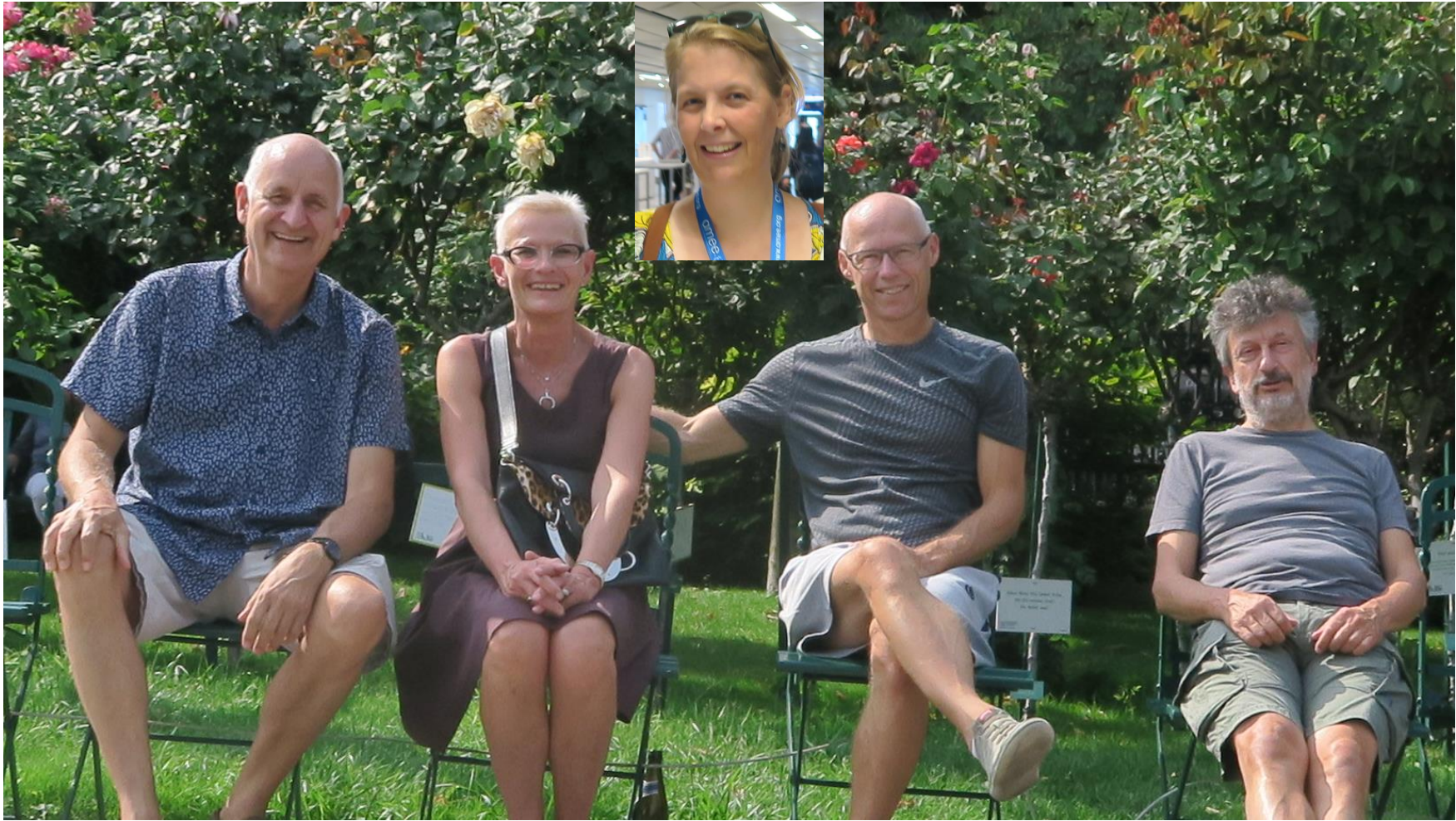
# Tutorcentret

på AMEE kongres i Wien  
2019





Michala Rose



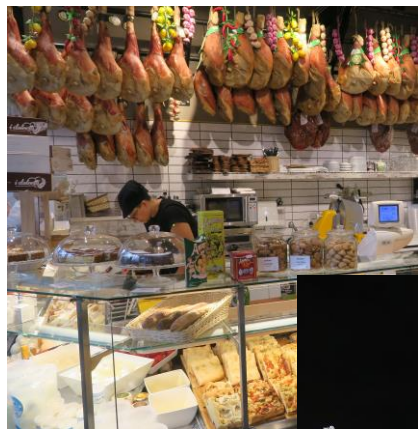
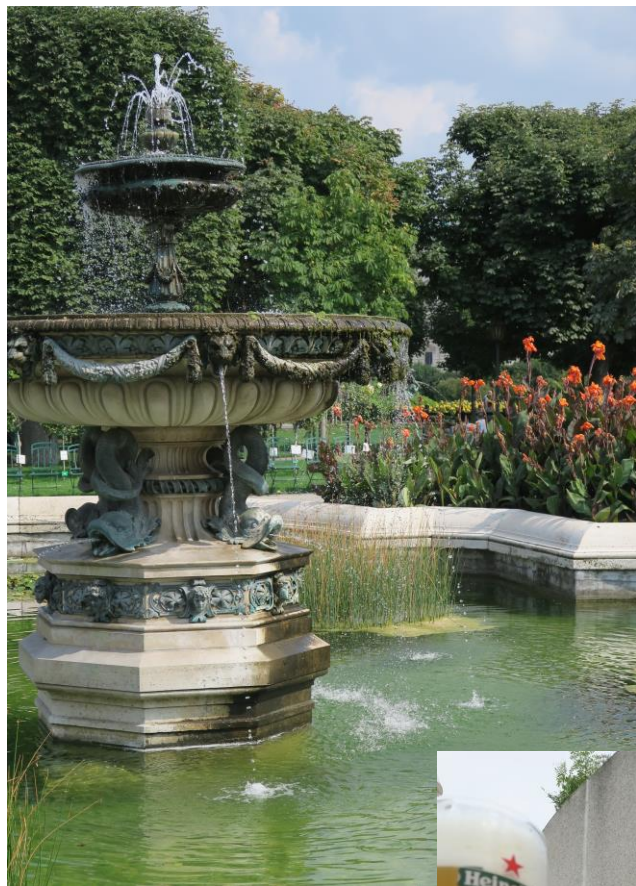
Lars Krag Møller

Trine David

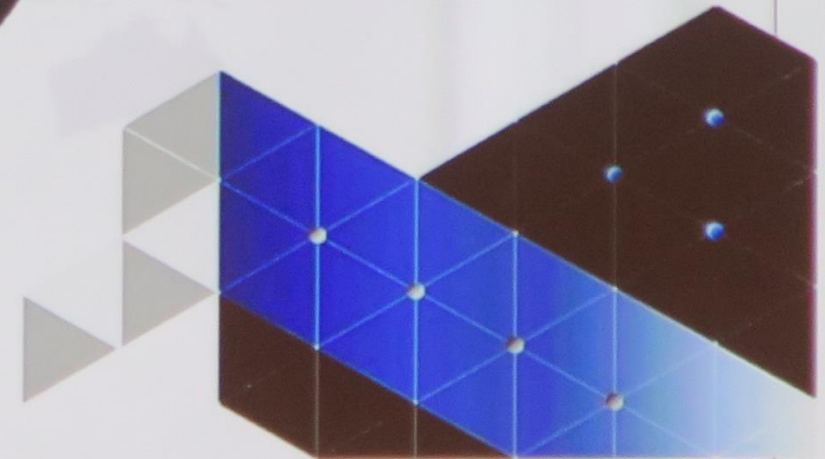
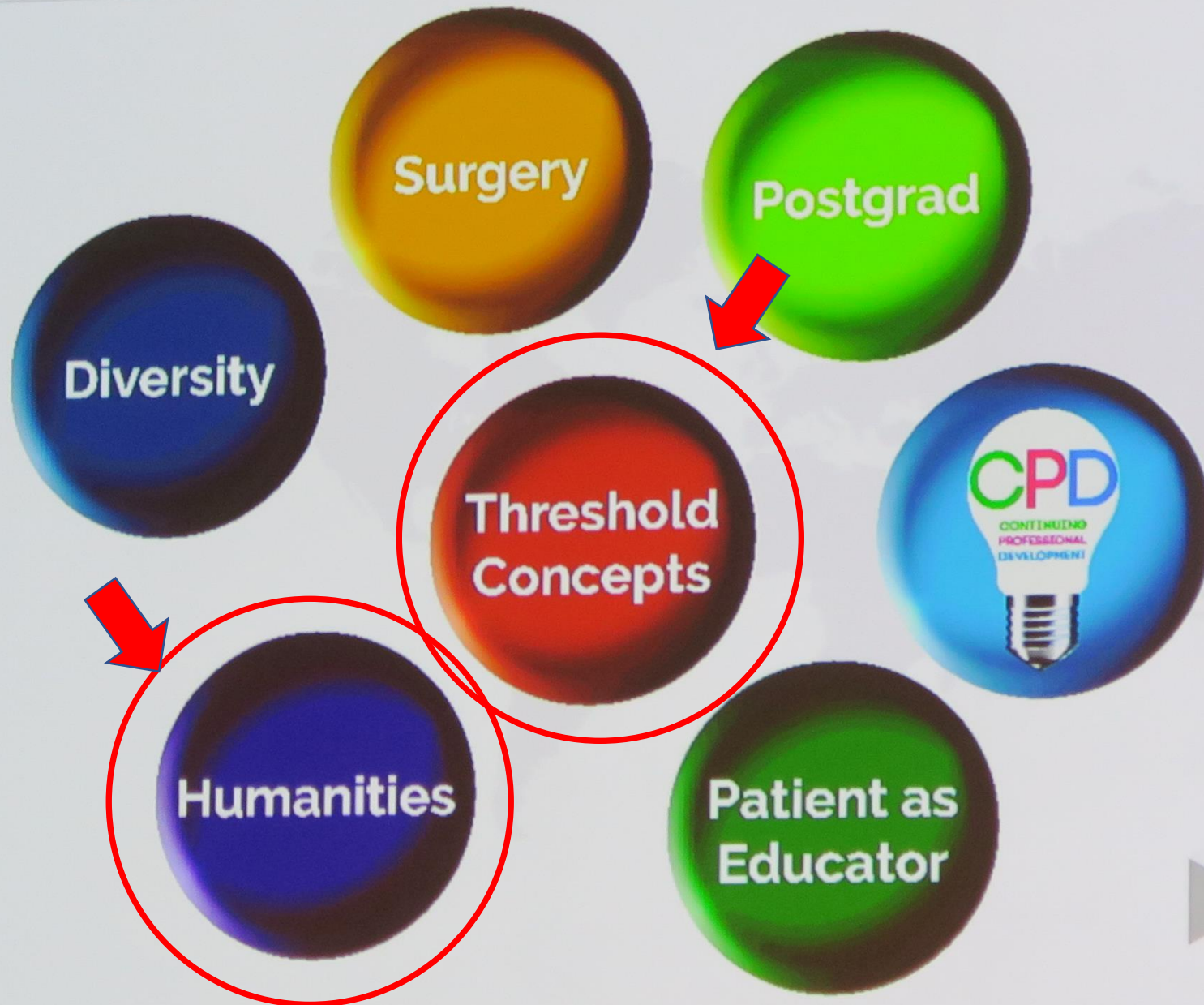
Juri Pedersen

Kim Holk

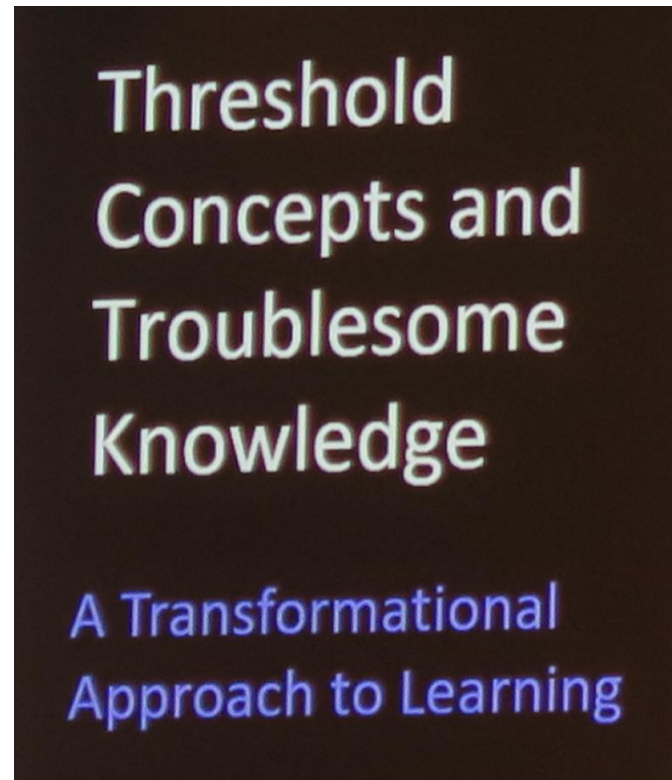




Ikke lutter alvor ;-)

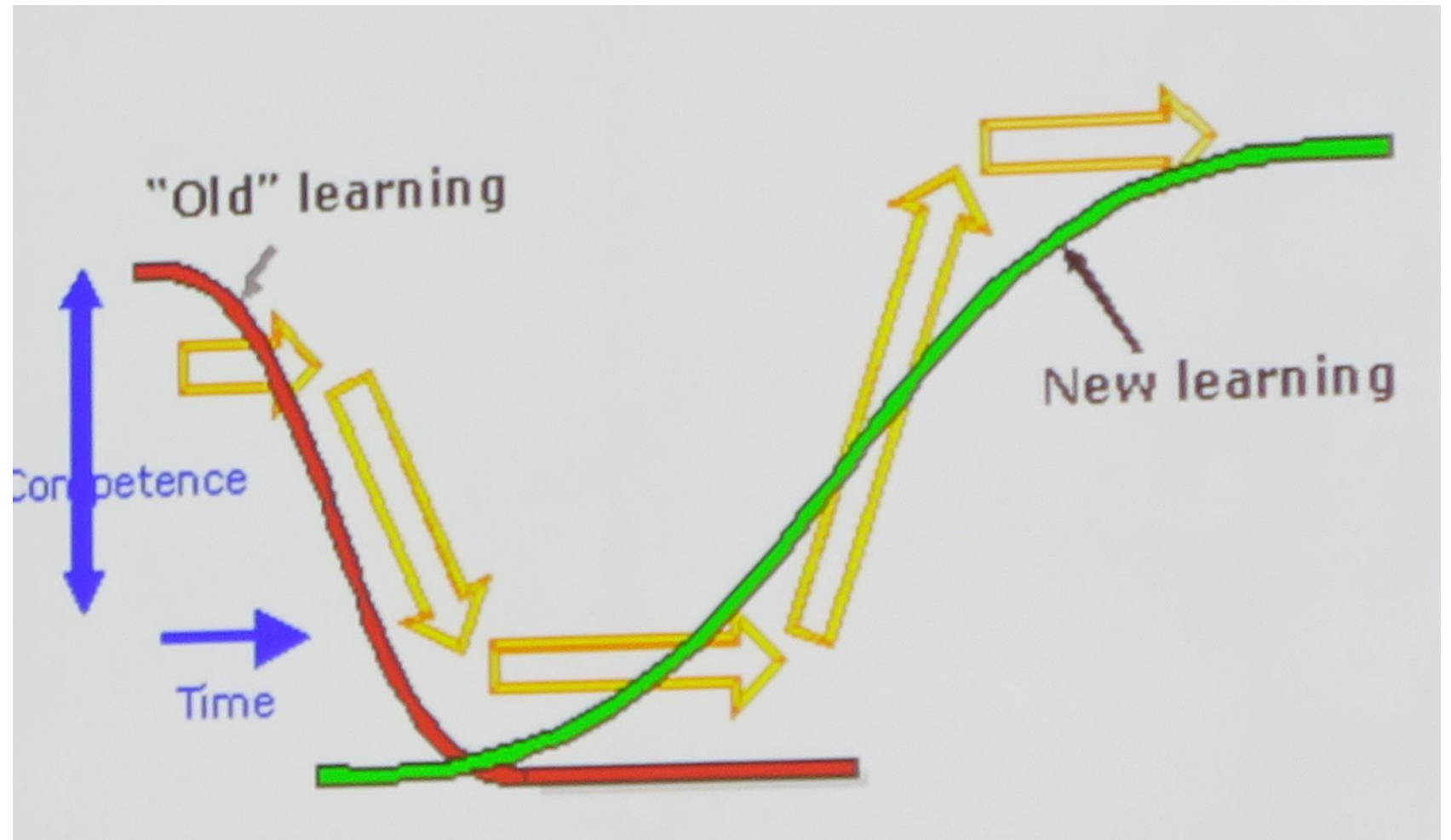






Ray Land Durham  
Emeritus professor  
Durham Univ. UK

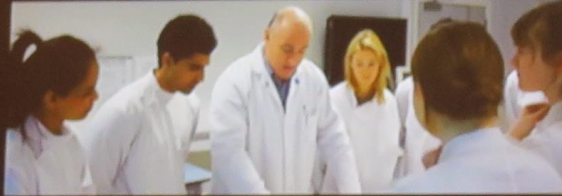
**Frustrationen over tab af kompetencer kan i sig selv  
være tilstrækkelig til at abortere processen i ny læring**



# Def. på en ekspert: At være tryk i det usikre

## Comfort with uncertainty

(Ilgen et al 2018)



- Describes instances where clinicians have the confidence to act on a problem (or wait and observe) while lacking full confidence in their understanding of the underlying cause of the issue.

- To act with confidence while simultaneously remaining uncertain is a paradox that epitomizes expert practice

(Ilgen et al 2018)

**Epitome:** typisk eller et godt eksempel



# Kan vi svare på...

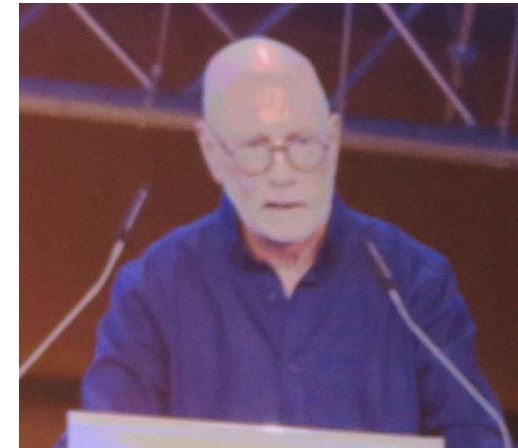
- how do professionals manage uncertainty arising from complex, ill-defined problems where there are conflicting assumptions, evidence, and opinion which may lead to different solutions?
- what does it mean to be 'comfortable' when working with ill-defined challenges (briefs) while feeling 'uncertain?'



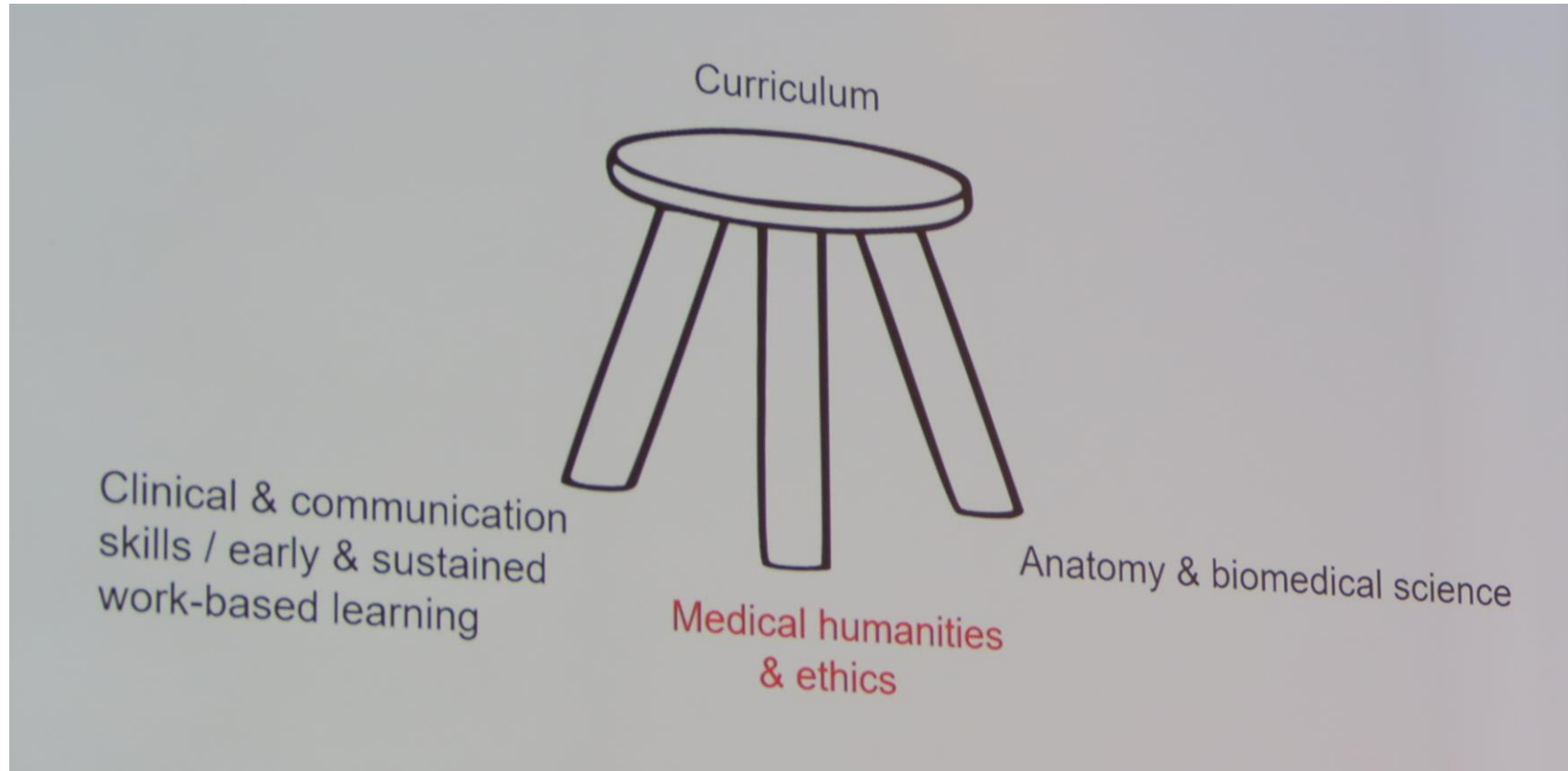
# Medical humanities & ethics

## Background: three decades of research findings

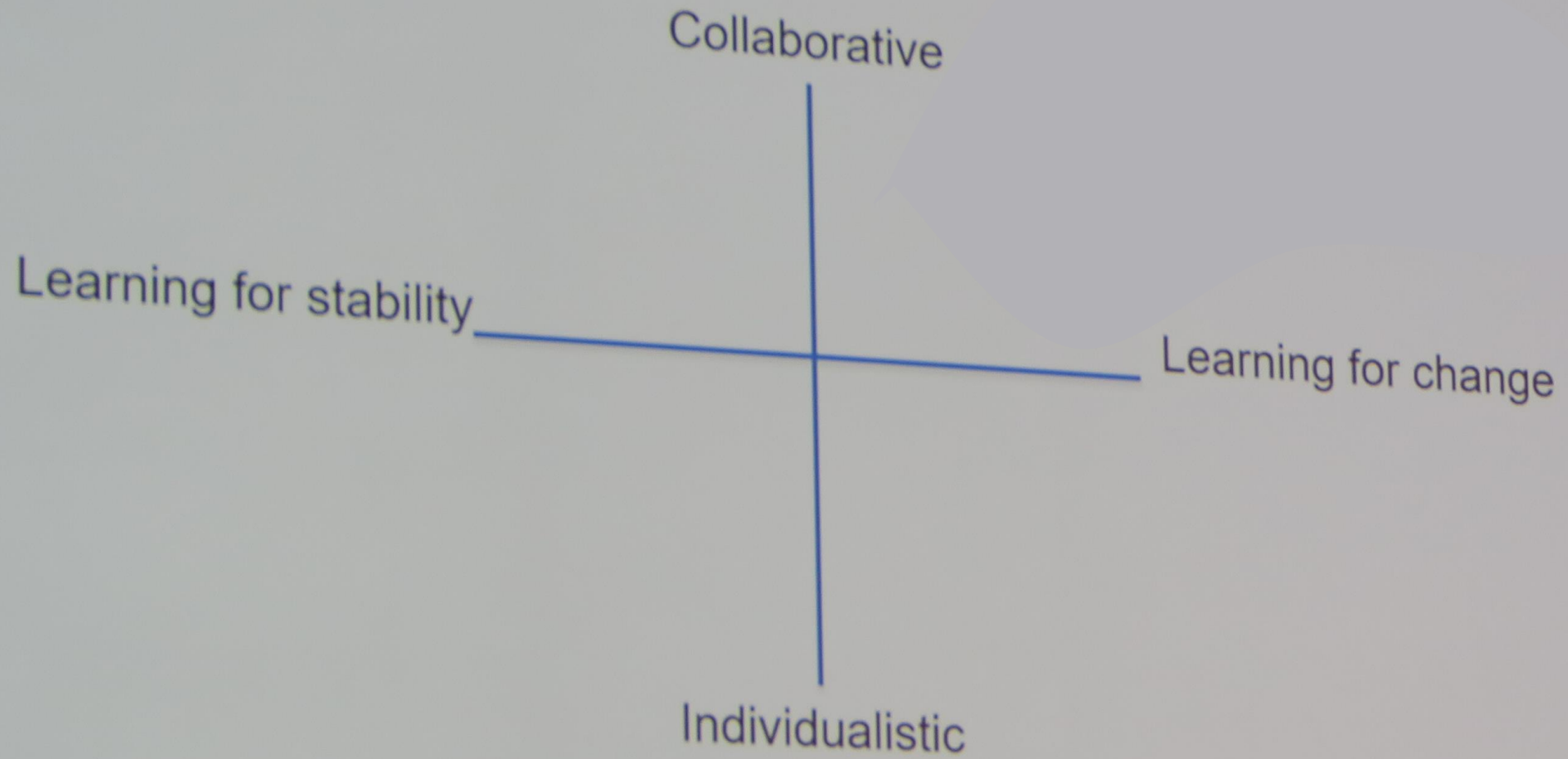
1. Cognitive empathy decline
2. Emotional detachment/ insulation  
objectification of patients  
cynicism
3. Medical error grounded in poor communication
4. Doctors' poor self care



Alan Bleakley  
Univ of Plymouth

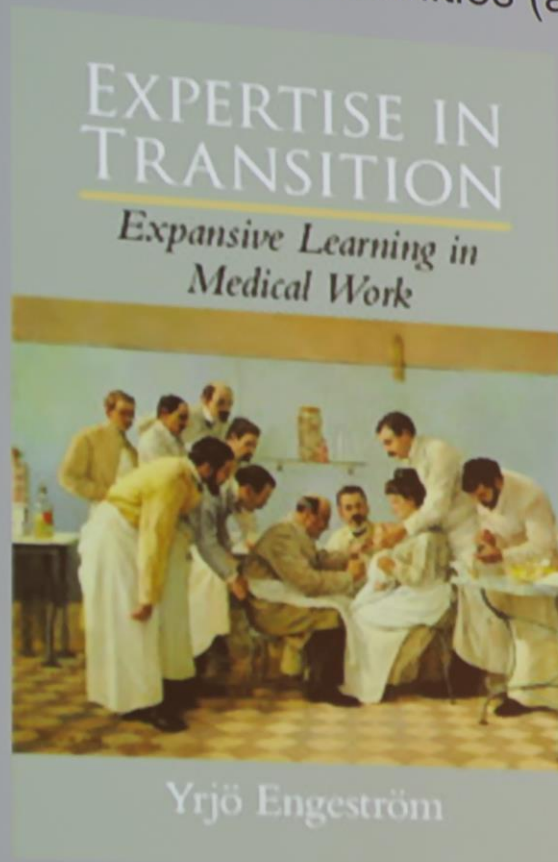






## How can Activity Theory help?

Framing an educational curriculum intervention grounded in the medical humanities (aesthetics, ethics and politics)





# Big Data in CPD and Medical Education

Martin V. Pusic

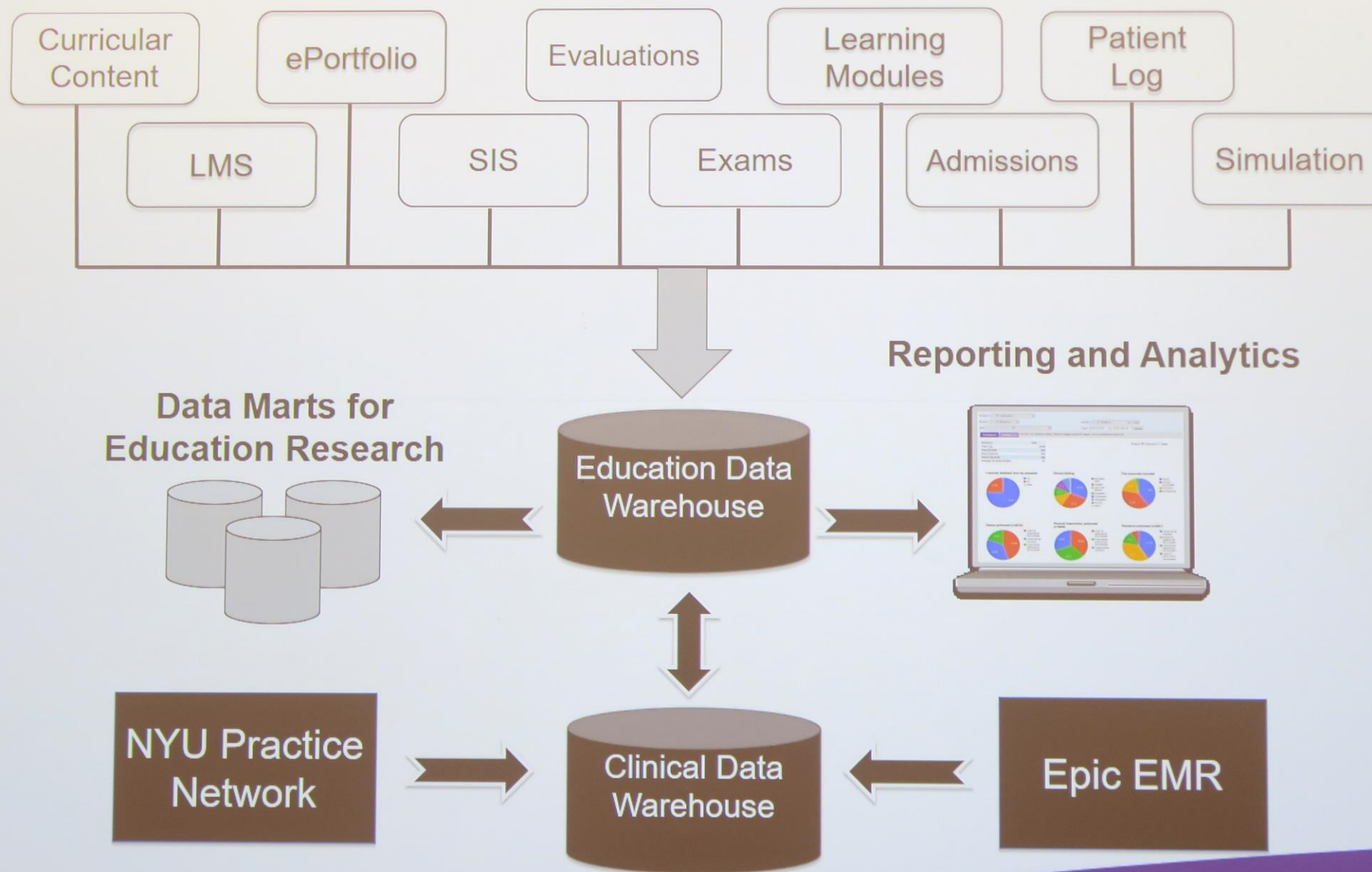
NYU Lagone Health, USA

# How is Big Data Different?

	Traditional	Big Data
Data Collection	Purposeful	Incidental / Opportunistic
Intrusiveness	High	Low
Data Acquisition Cost	High	Low
Frequency	e.g. Quarterly	Continuously
Temporality	Static Reports	Dynamic Dashboards
Hypotheses	Causal	Associations
Sample Size	Small biopsies	Large swaths



# NYU Education Data Warehouse



# Feedback

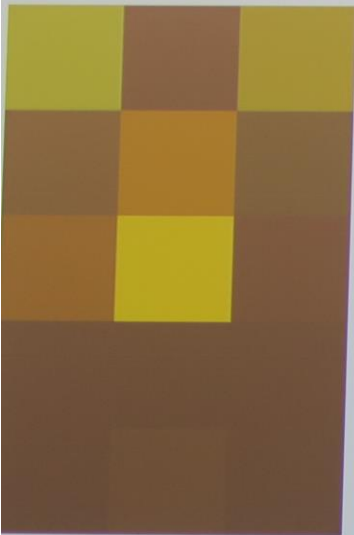
## How is ~~Big Data~~ Different?

	Traditional	<del>Big Data</del>
Data Collection	Purposeful	Incidental / Opportunistic
Intrusiveness	High	Low
Data Acquisition Cost	High	Low
Frequency	e.g. Quarterly	Continuously
Temporality	Static Reports	Dynamic Dashboards
Hypotheses	Causal	Associations
Sample Size	Small biopsies	Large swaths

Feedback



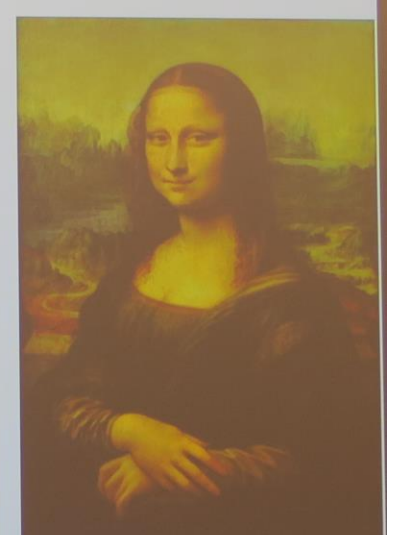
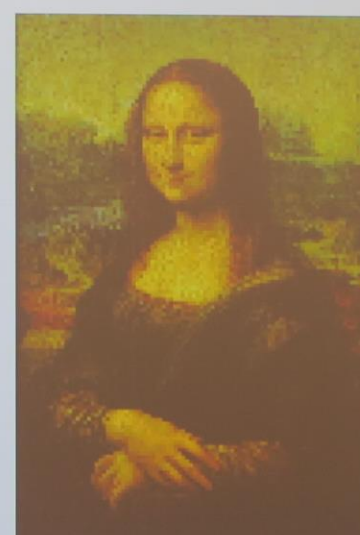
# An ever increasing picture of progress



Where we were



Now



Next steps

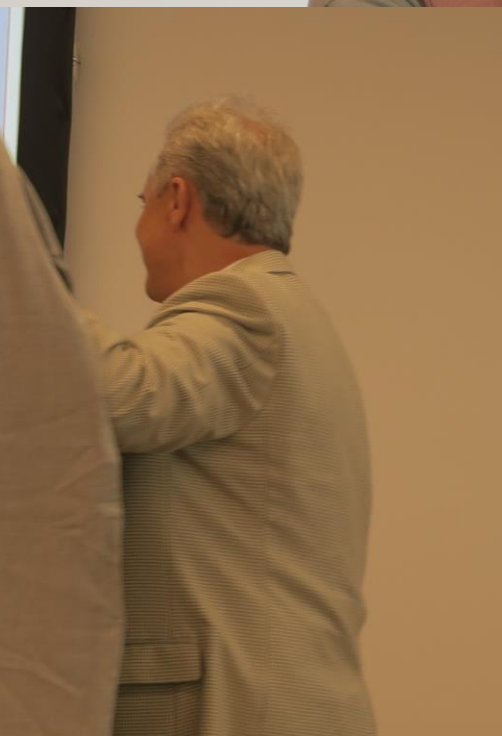
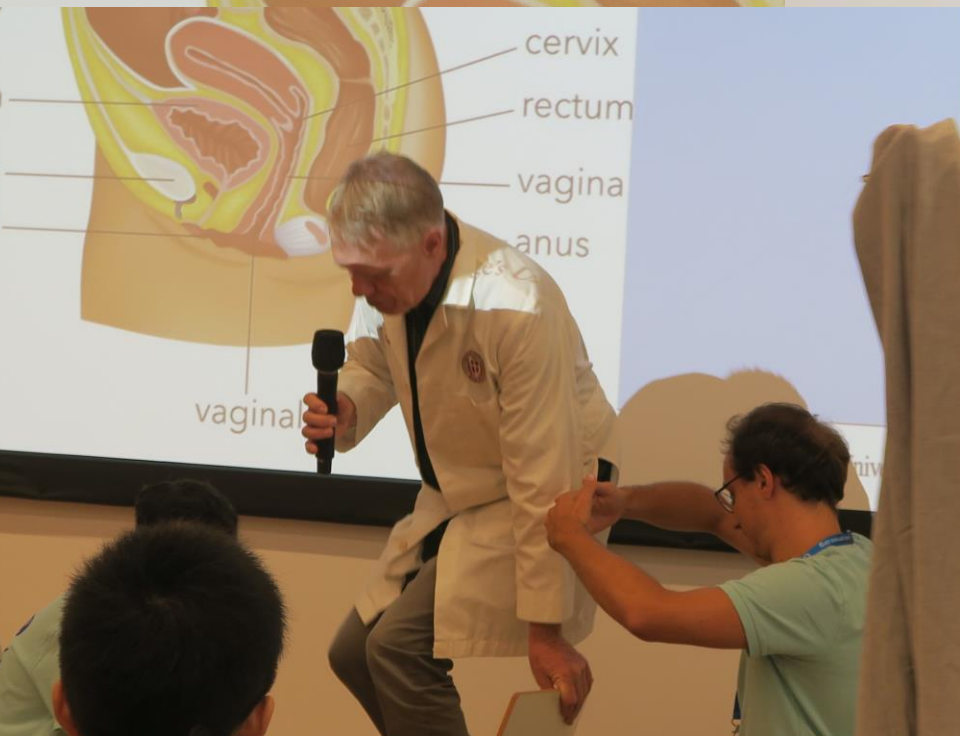
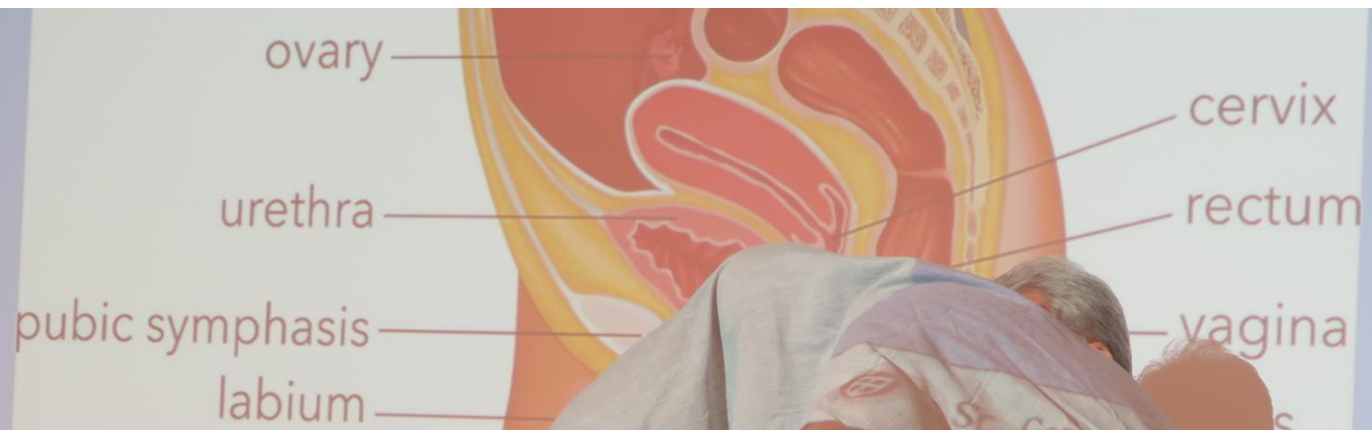
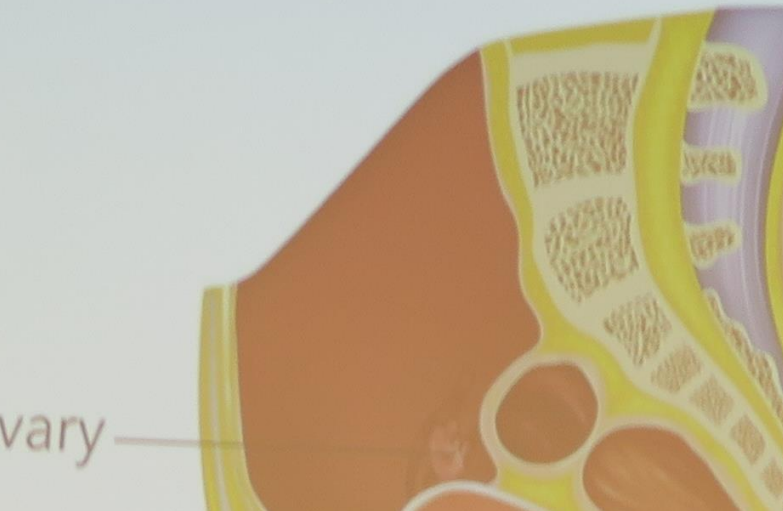




# Laughing to learn, our new experience in morbid anatomy

Cristian Stefan

# Female Reproduct



# AMEE kongressen, 2019



En super oplevelse